


El Nido Beach  
REDISCOVER LIFE IN NATURE

# Progress Report

April 2024





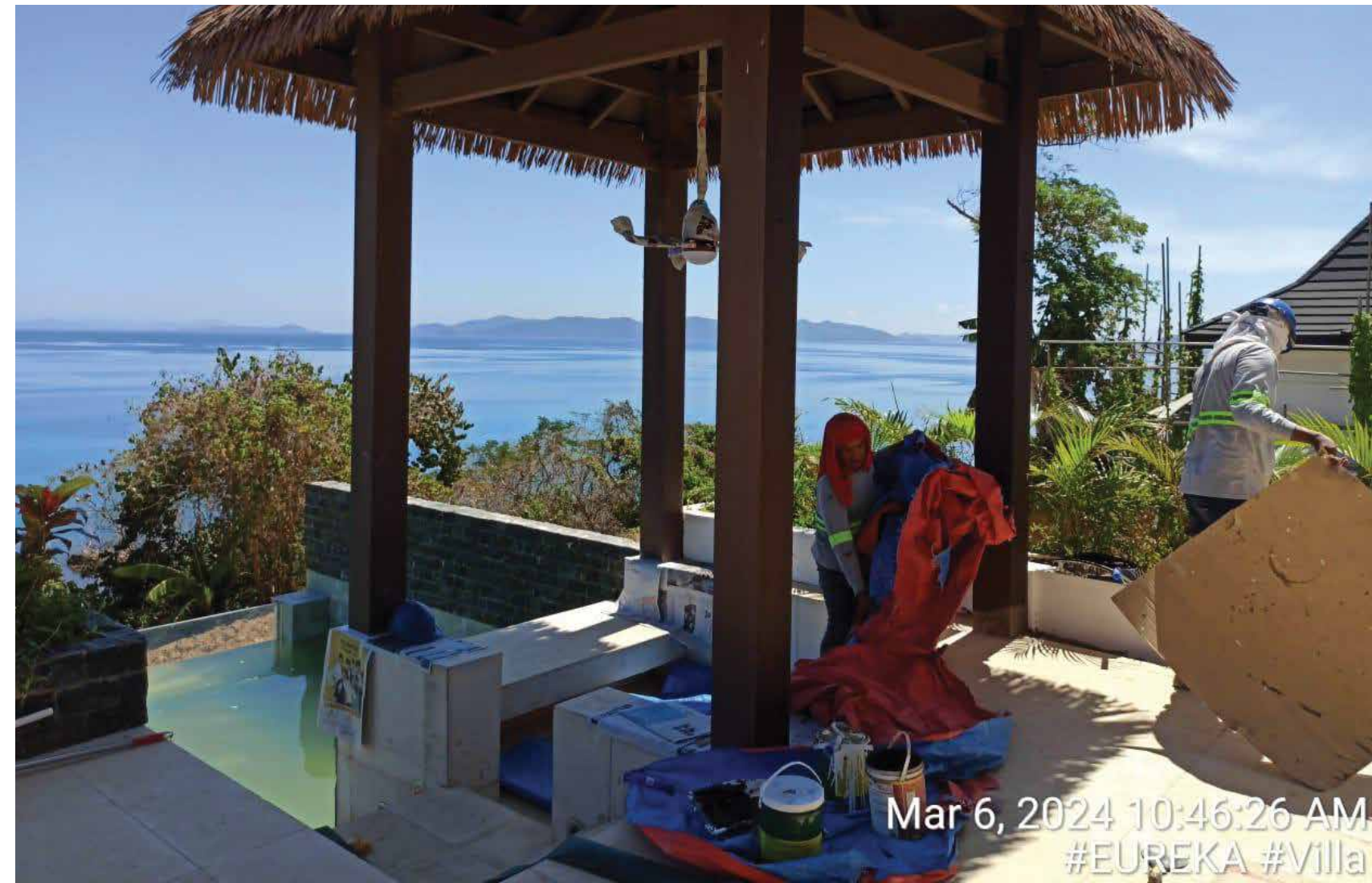
The image shows a modern, open-plan living area of a duplex villa. On the left, a large floor-to-ceiling window with a wooden frame looks out onto a sandy beach and the ocean under a cloudy sky. In the foreground, a wicker armchair with a white cushion sits on a patterned rug. A round, dark wood coffee table is in the center. To the right, a light blue sofa with dark cushions is visible. A tall potted plant stands near the window. The ceiling features a large, dark wood fan and white fringe curtains. A dark blue diagonal overlay on the right side contains the text 'DUPLEX VILLAS' in white.

# DUPLEX VILLAS



# Construction Progress

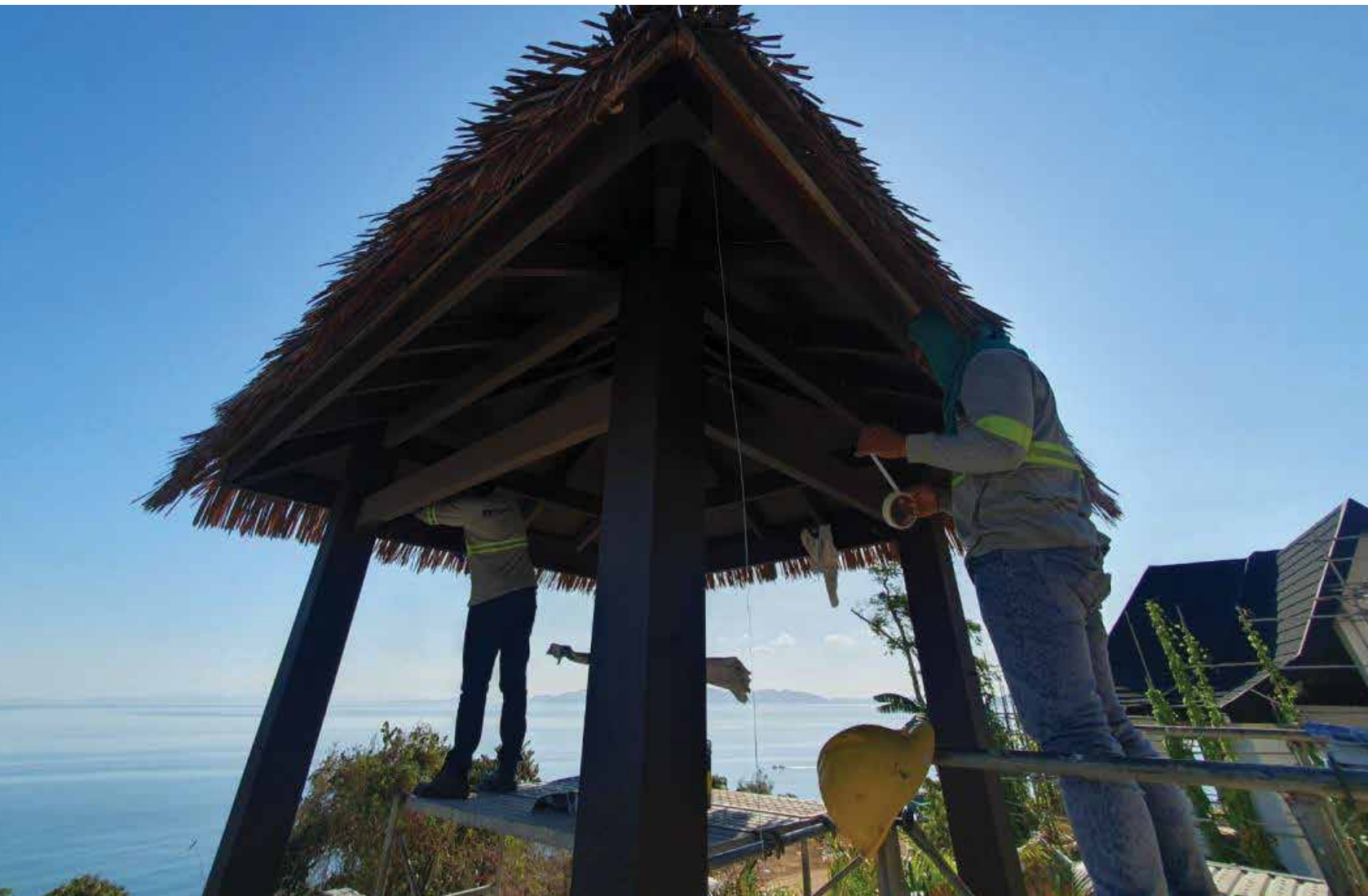
Painting Of Gazebo Ceiling At  
Villa 11 –a&b





# Construction Progress

Painting Of Gazebo Ceiling At  
Villa 11-a & B





# Construction Progress

Painting Of Gazebo Ceiling At  
Villa 11-a & B





# Construction Progress

Completed Painting At  
Villa 11-a&b





# Construction Progress

Cleaning Of Swimming Pool Tiles At Villa 11 -a





# Construction Progress

Sealant Application At  
Villa 11- B Pool

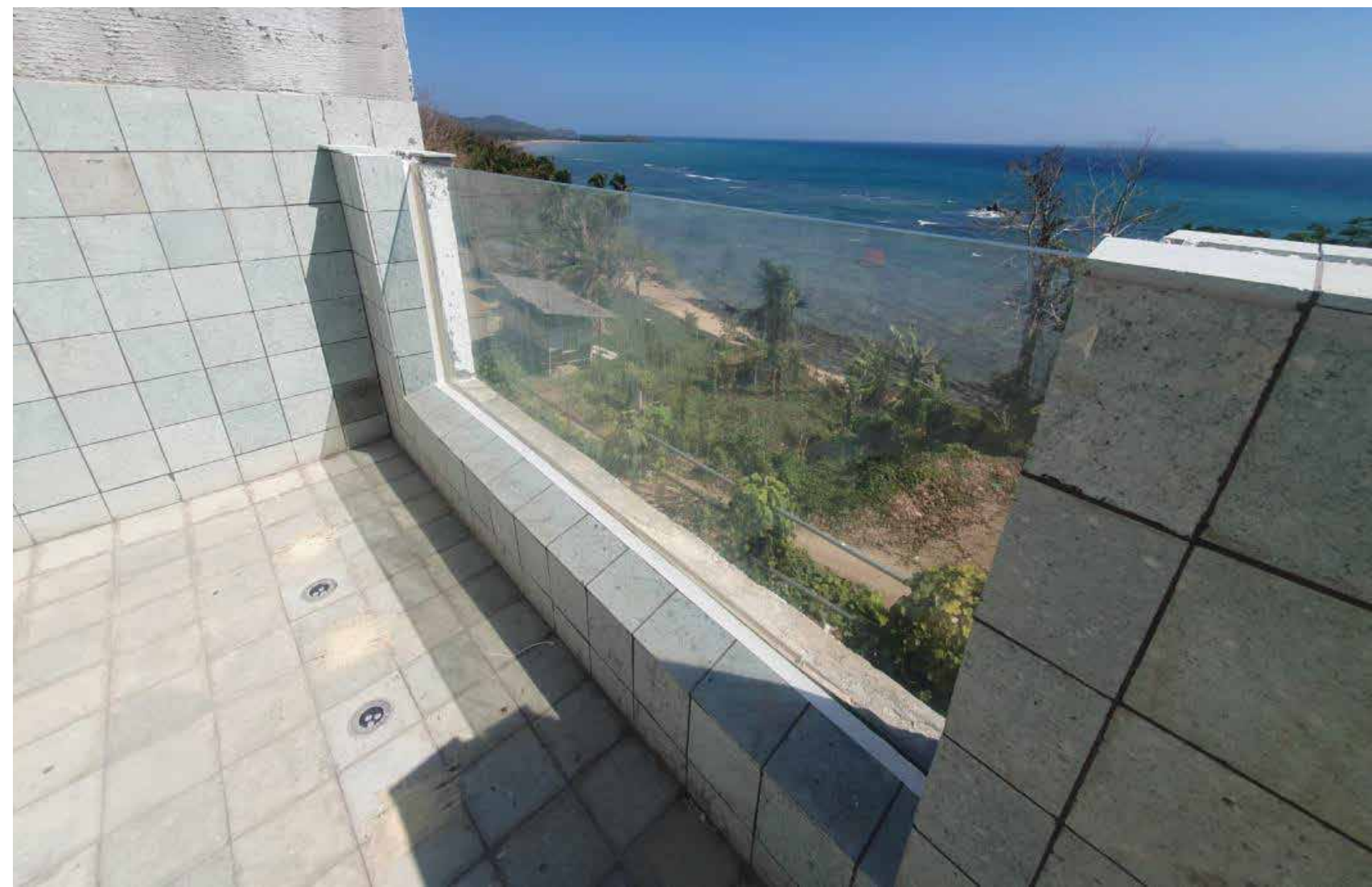






# Construction Progress

Completed Application





# Construction Progress

Installation Of Pool Lighting  
& Equipment





# Construction Progress

Installation Of Pool Lighting & Equipment





# Construction Progress

**DISMANTLING OF SCAFFOLDINGS  
AT VILLA 21**







**DISMANTLING OF  
SCAFFOLDINGS AT VILLA 22**

# Construction Progress

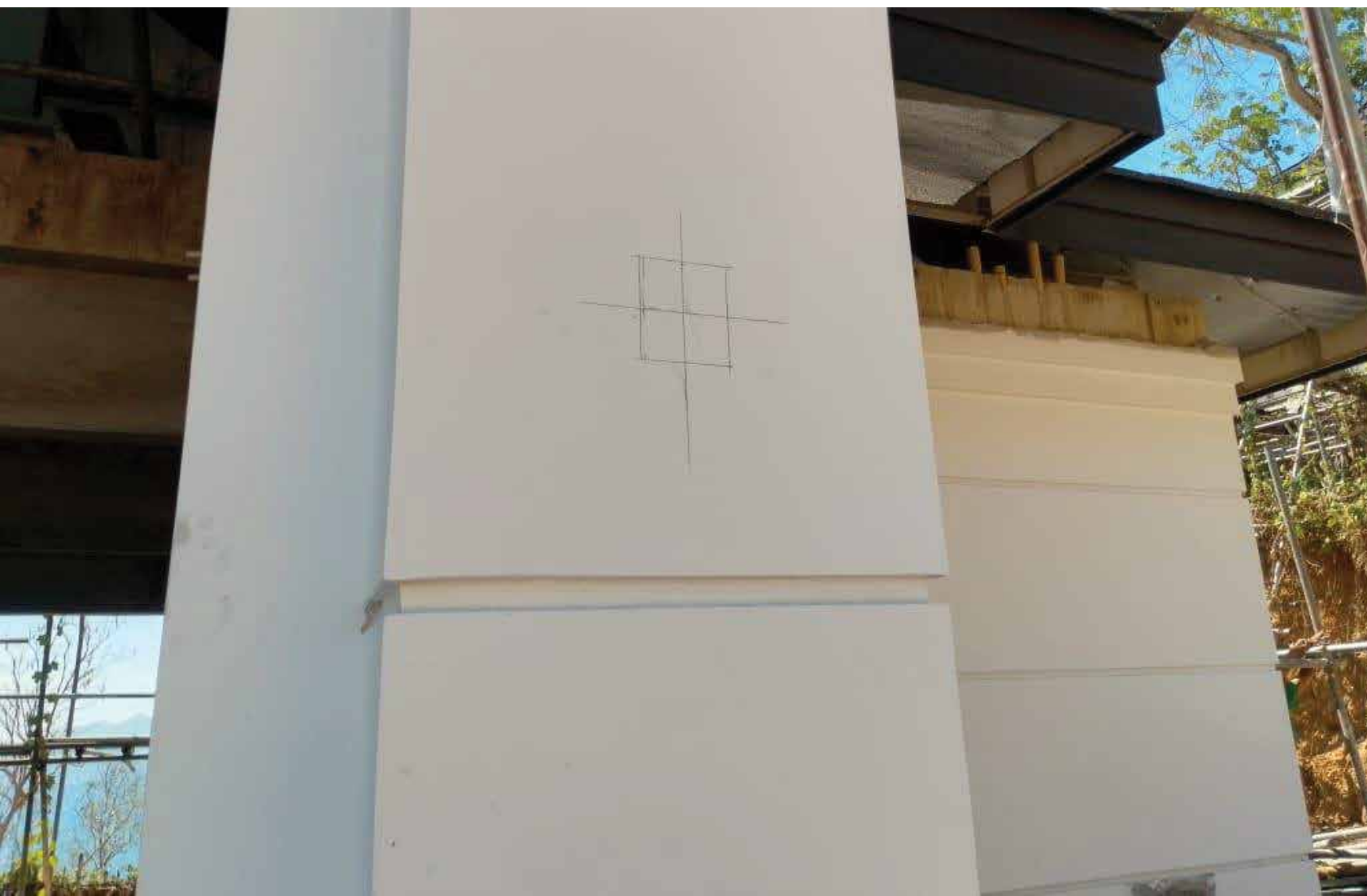
**COMPLETED**





# Construction Progress

Markings For Electrical  
Layout At Villa 22





# Construction Progress

Chipping Works At Villa 22





# Construction Progress

Installation Of Trusses At Villa 15





# Construction Progress

Installation Of Trusses At Villa 15





# Construction Progress

Installation Of Trusses At Villa 15





# Construction Progress

Installation Of Trusses At Villa 15





# Percentage Completion

## Shell Structure as of May 10, 2024

1. Villa 11 – 100.00%
2. Villa 12 – 100.00%
3. Villa 13 – 90.95%
4. Villa 14 – 90.79%
5. Villa 15 – 82.60%
6. Villa 21 – 77.11%
7. Villa 22 – 67.29%







# FRONT OF HOUSE & BACK OF HOUSE



# Construction Progress

## Installation Of Rebars & Formworks



**Erection Of Suppports & Scaffoldings**





# Construction Progress

## Installation Of Rebars



## Installation Of Forms





**Installation Of Forms**

# Construction Progress

**Installation Of Rebars**





# Construction Progress

## Installation Of Forms



## Installation Of Rebars



# Construction Progress

Installation Of Support & Platforms





# Construction Progress

Pipe Laying For Concrete Pouring



Preparation For Concrete Pouring



# Construction Progress

Installation Of Support & Platforms





# Construction Progress

## Slump Testing



**Concrete Sample**



# Construction Progress

Concrete Pouring At Roof Beams





# Construction Progress

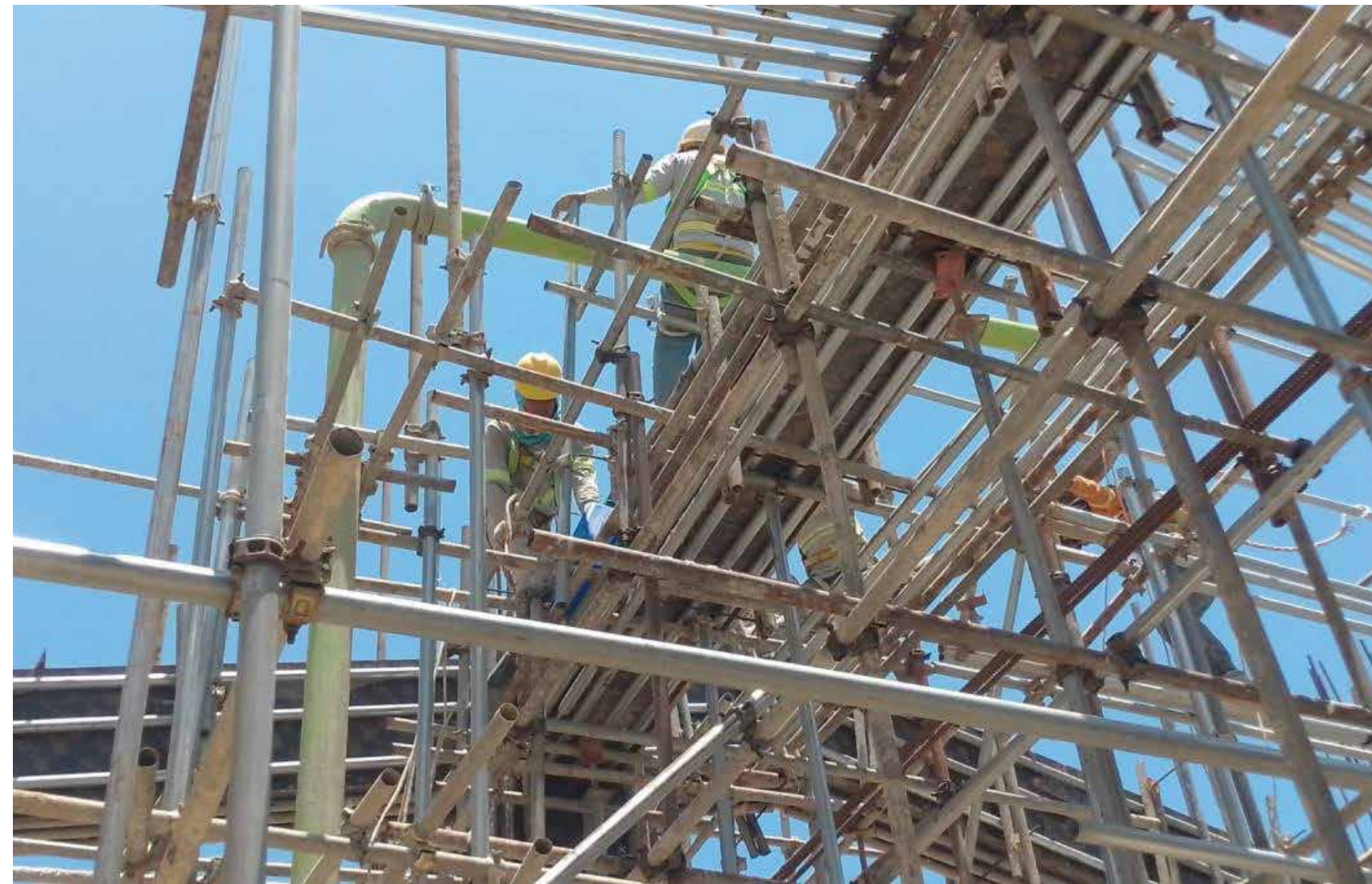
Concrete Pouring At Roof Beams





# Construction Progress

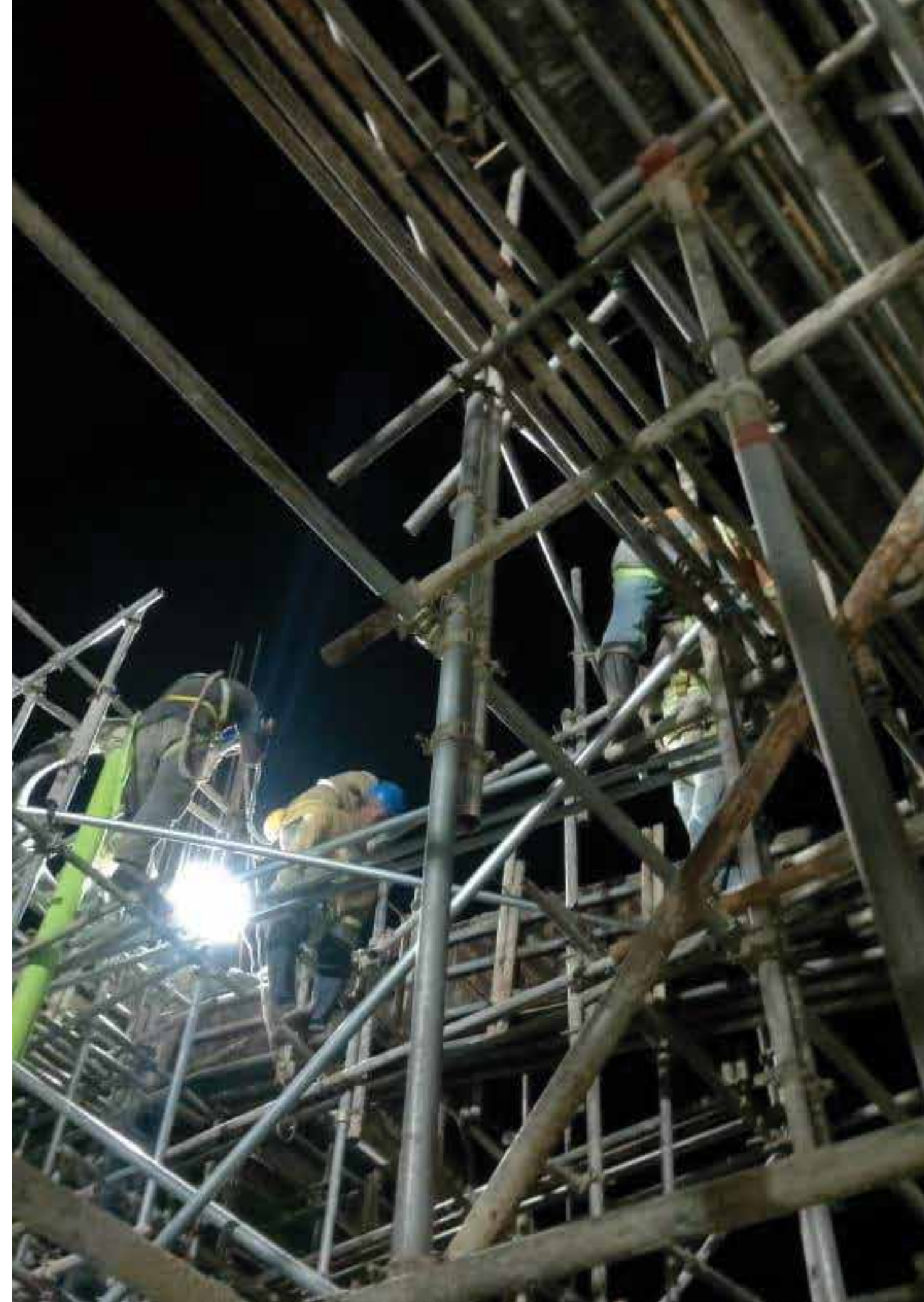
Concrete Pouring At Roof Beams





# Construction Progress

Concrete Pouring At Roof Beams





# Construction Progress

Completed Pouring At Roof Beams





# Construction Progress

Completed Pouring At Roof Beams





# Construction Progress

Completed Pouring At Roof Beams





# Construction Progress

Completed Pouring At Roof Beams





# Construction Progress

Completed Pouring At Roof Beams

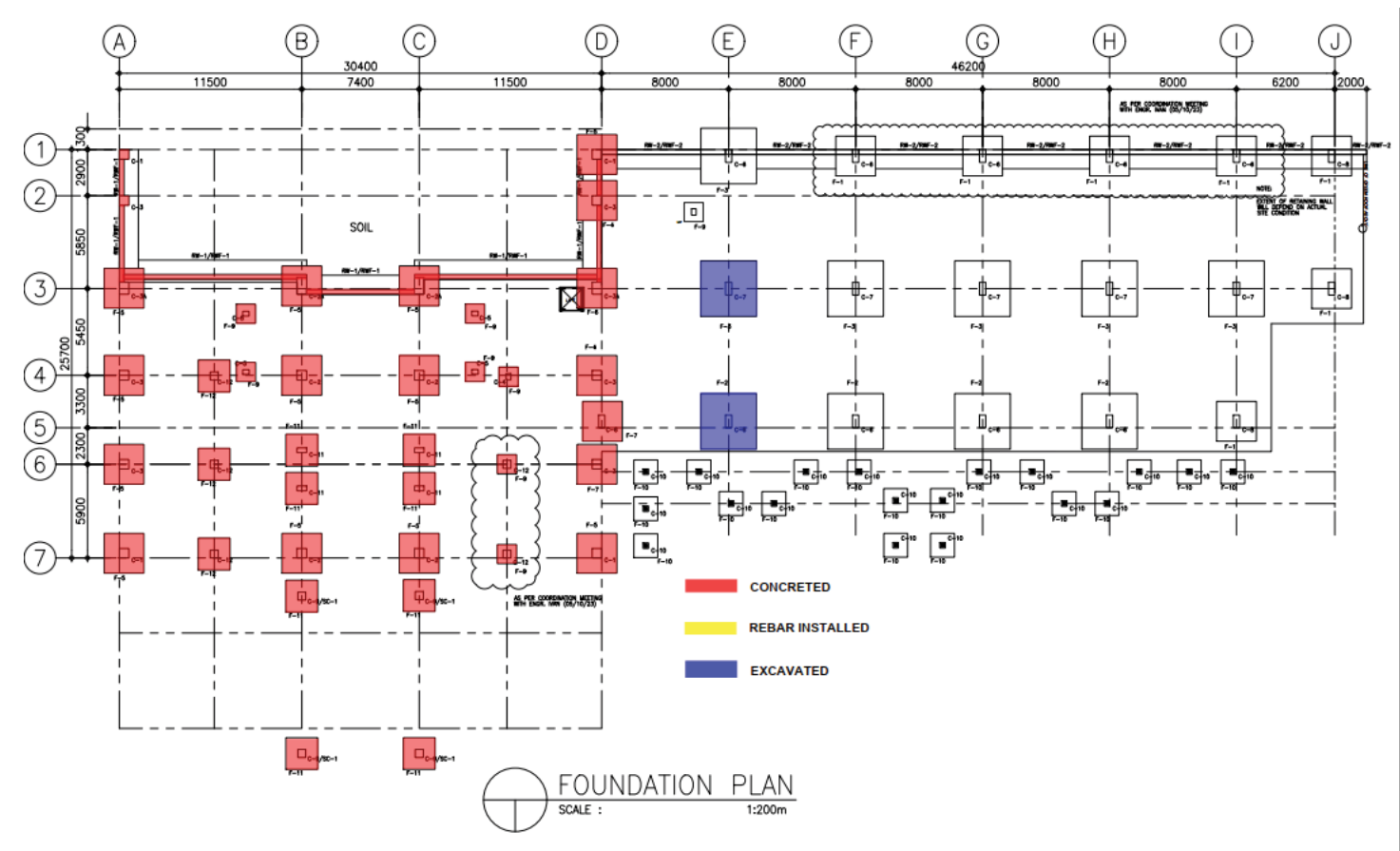




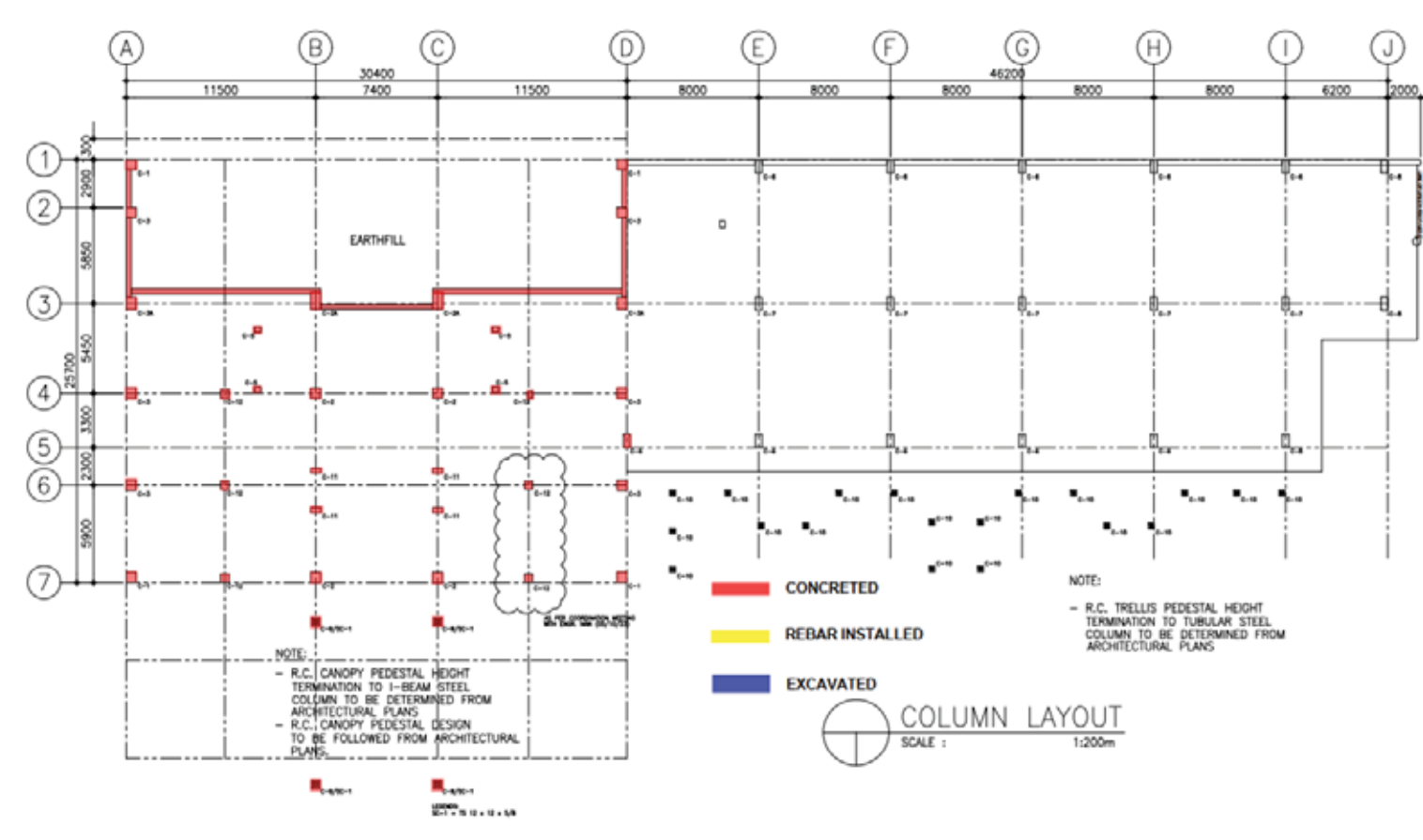
# Structural Completion

As of May 10, 2024

## Foundation



## Column

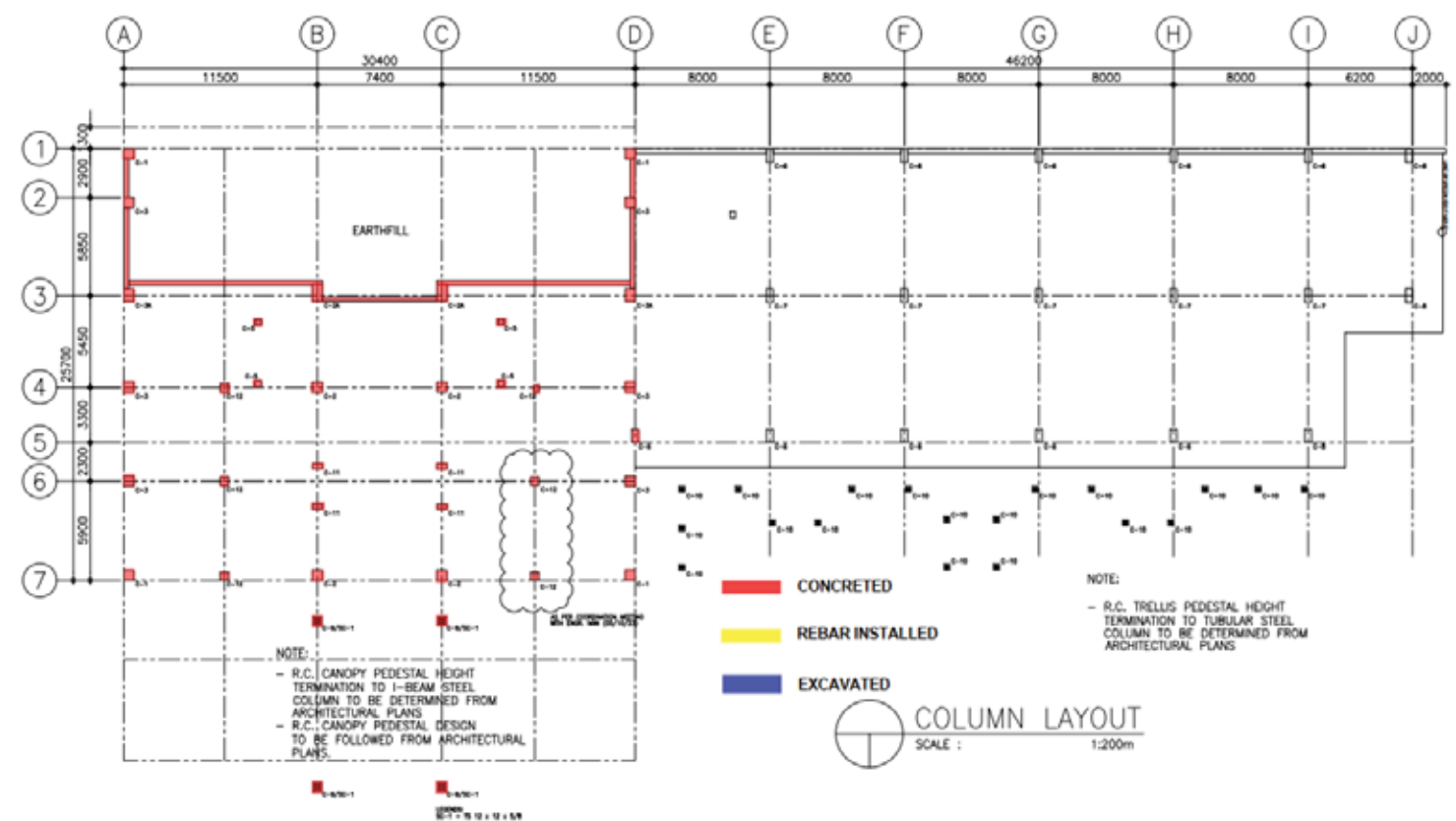




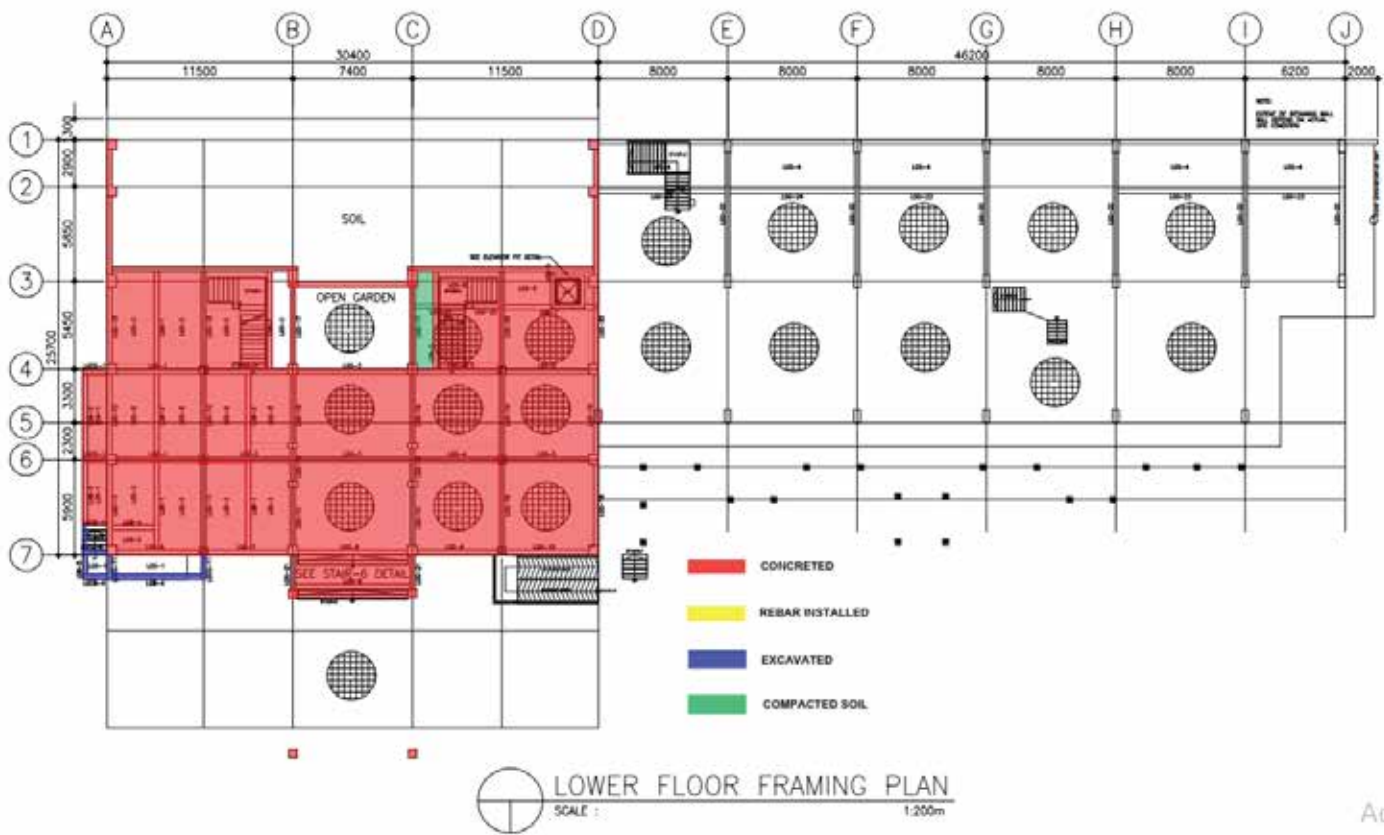
# Structural Completion

As of May 10, 2024

## Foundation



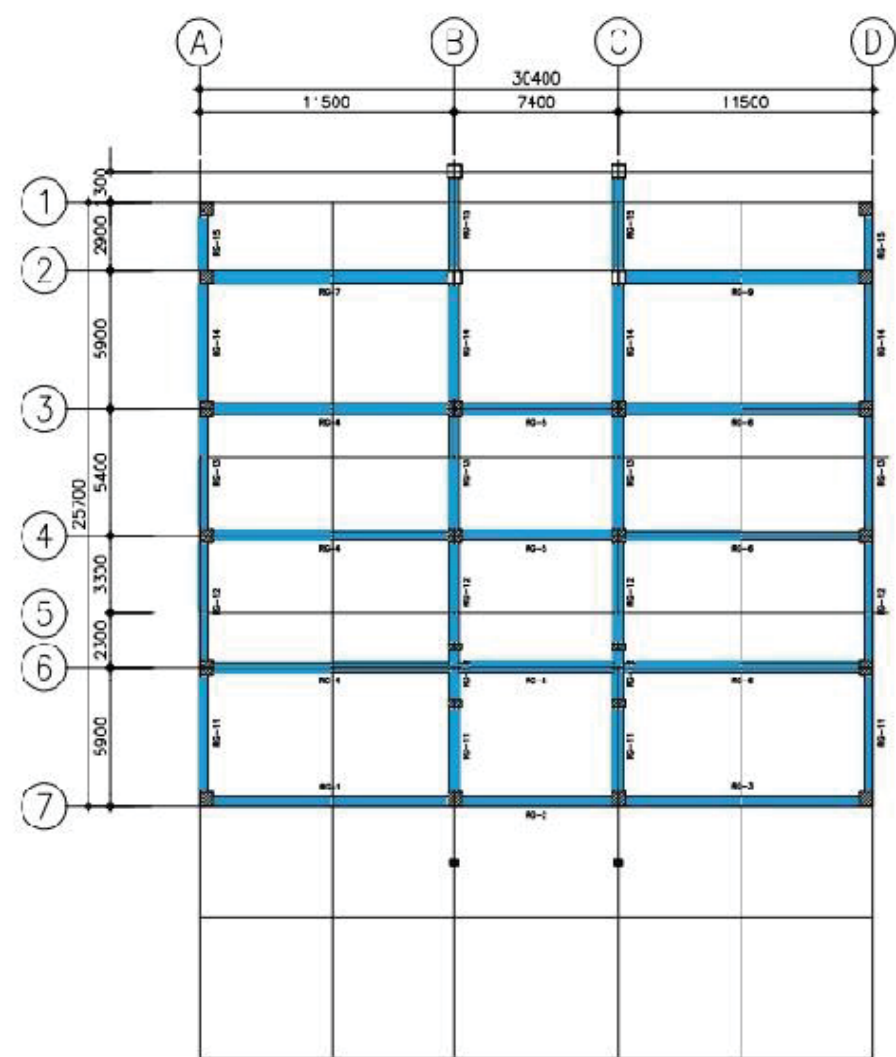
## Column





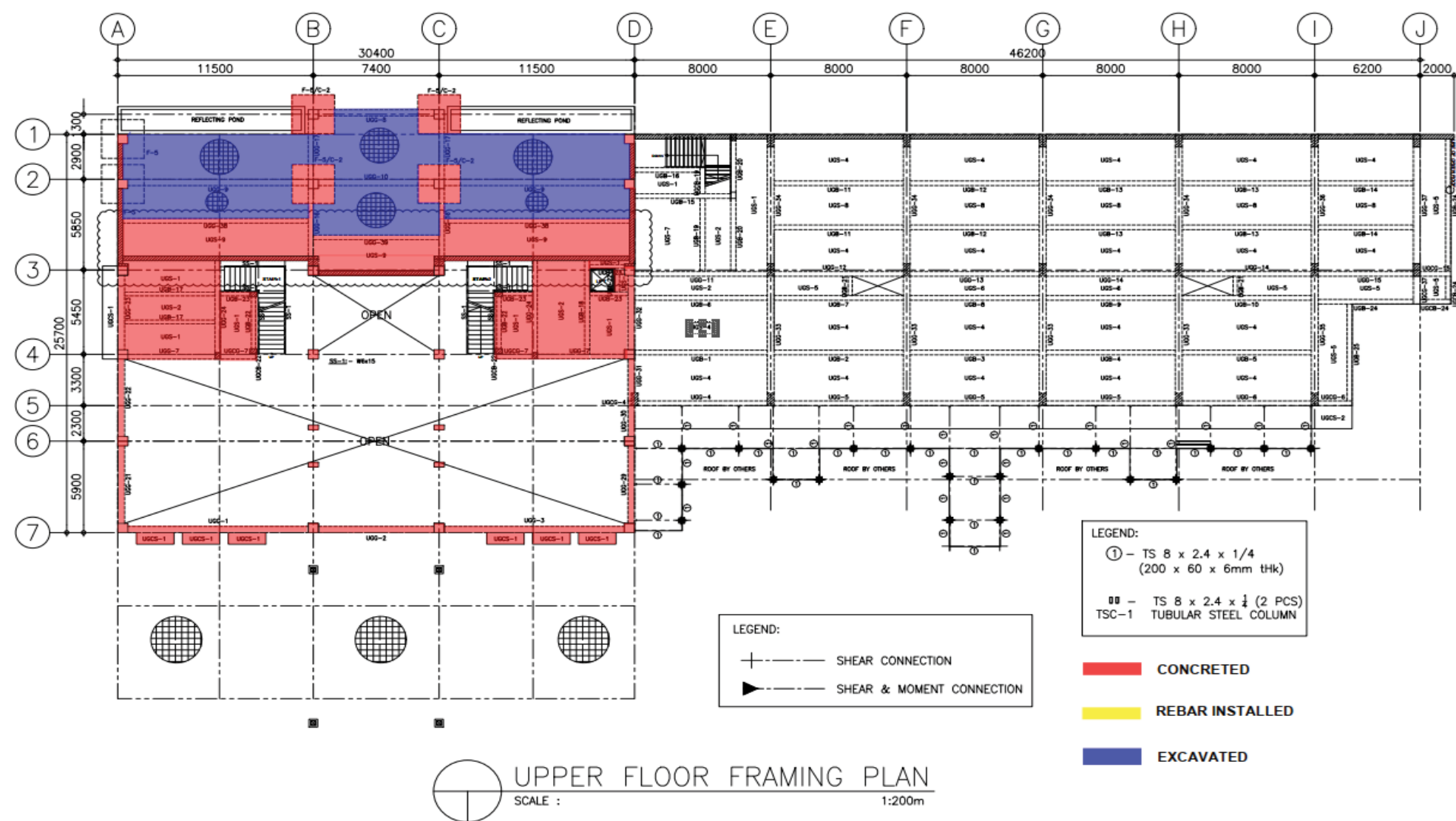
# Structural Completion

As of May 10, 2024



ROOF LEVEL FRAMING PLAN  
SCALE : 1:200m

LEGEND  
CONCRETED

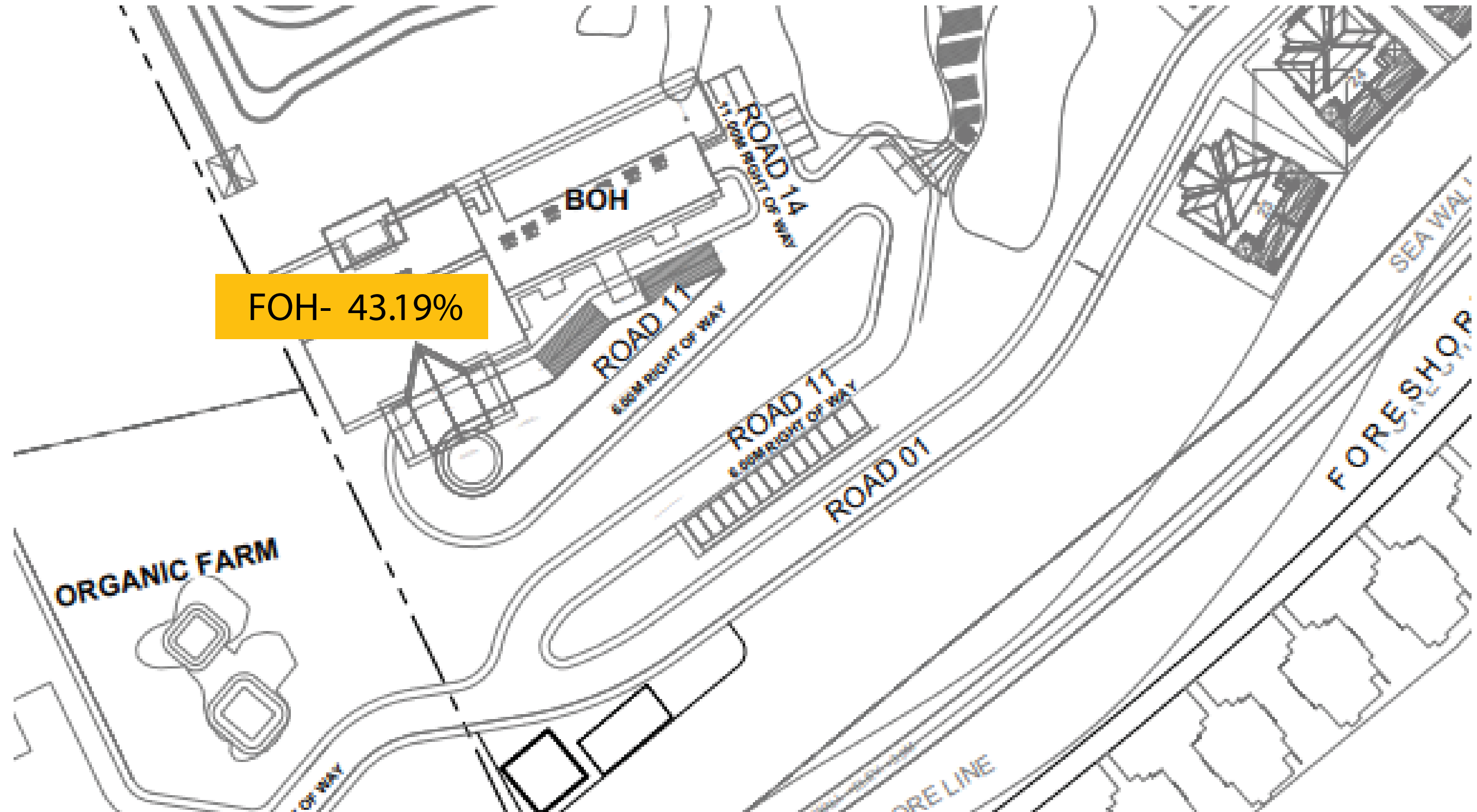


UPPER FLOOR FRAMING PLAN  
SCALE : 1:200m



# Percentage Completion

As of May 10, 2024





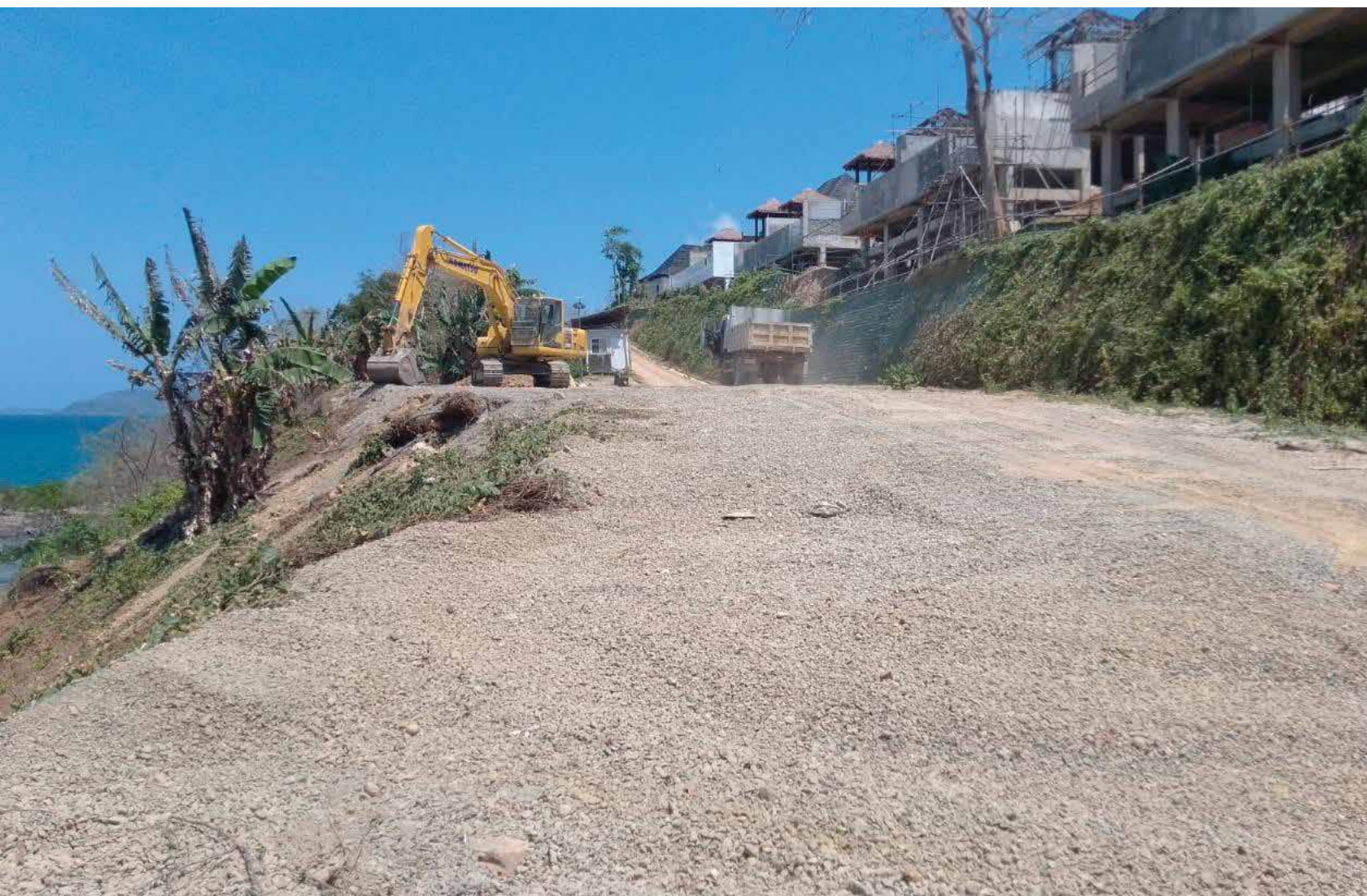
# LAND DEVELOPMENT





# Construction Progress

**Road 1 Clearing**

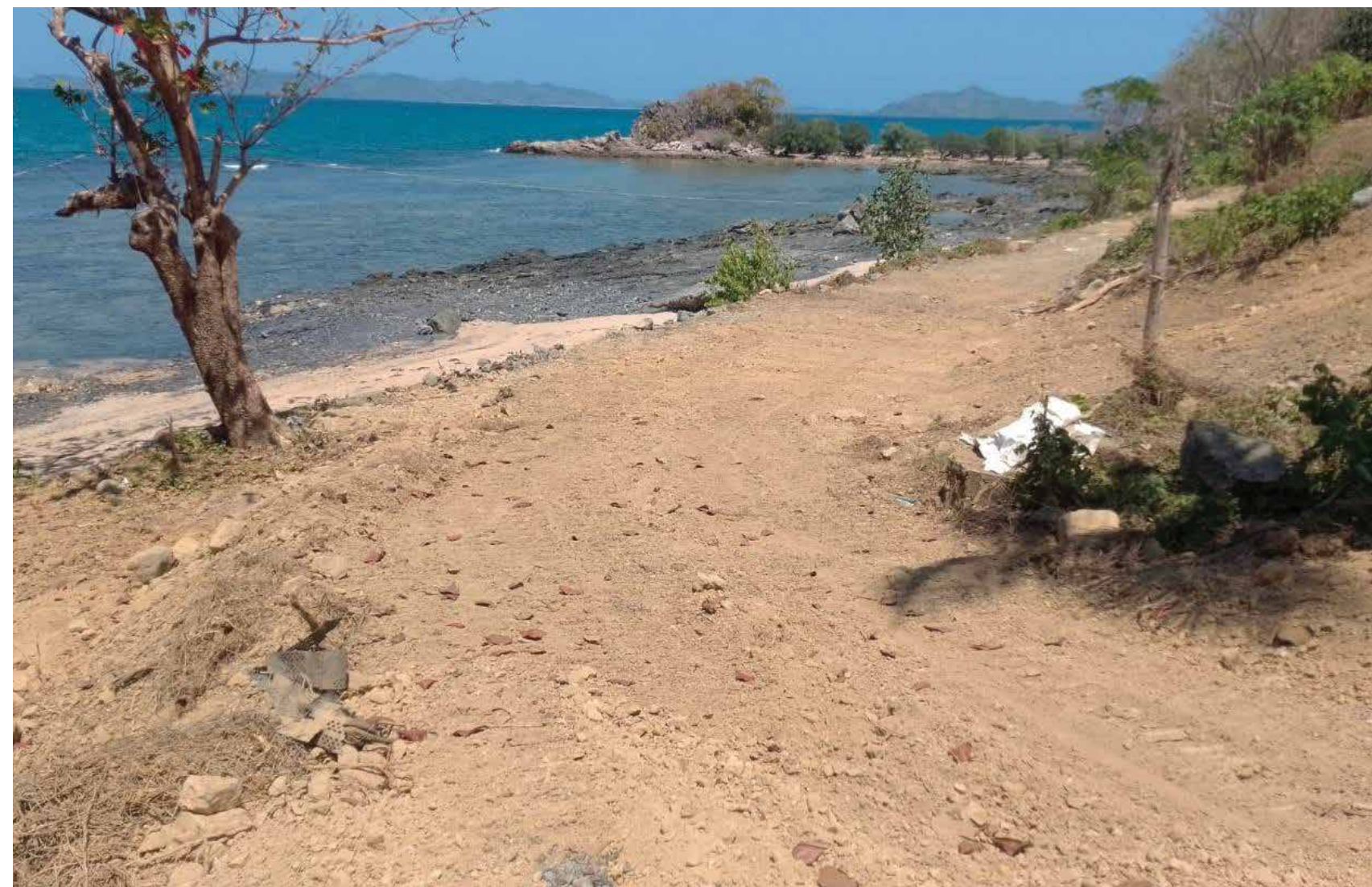


**Beach Restaurant Clearing**



# Beach Front Progress

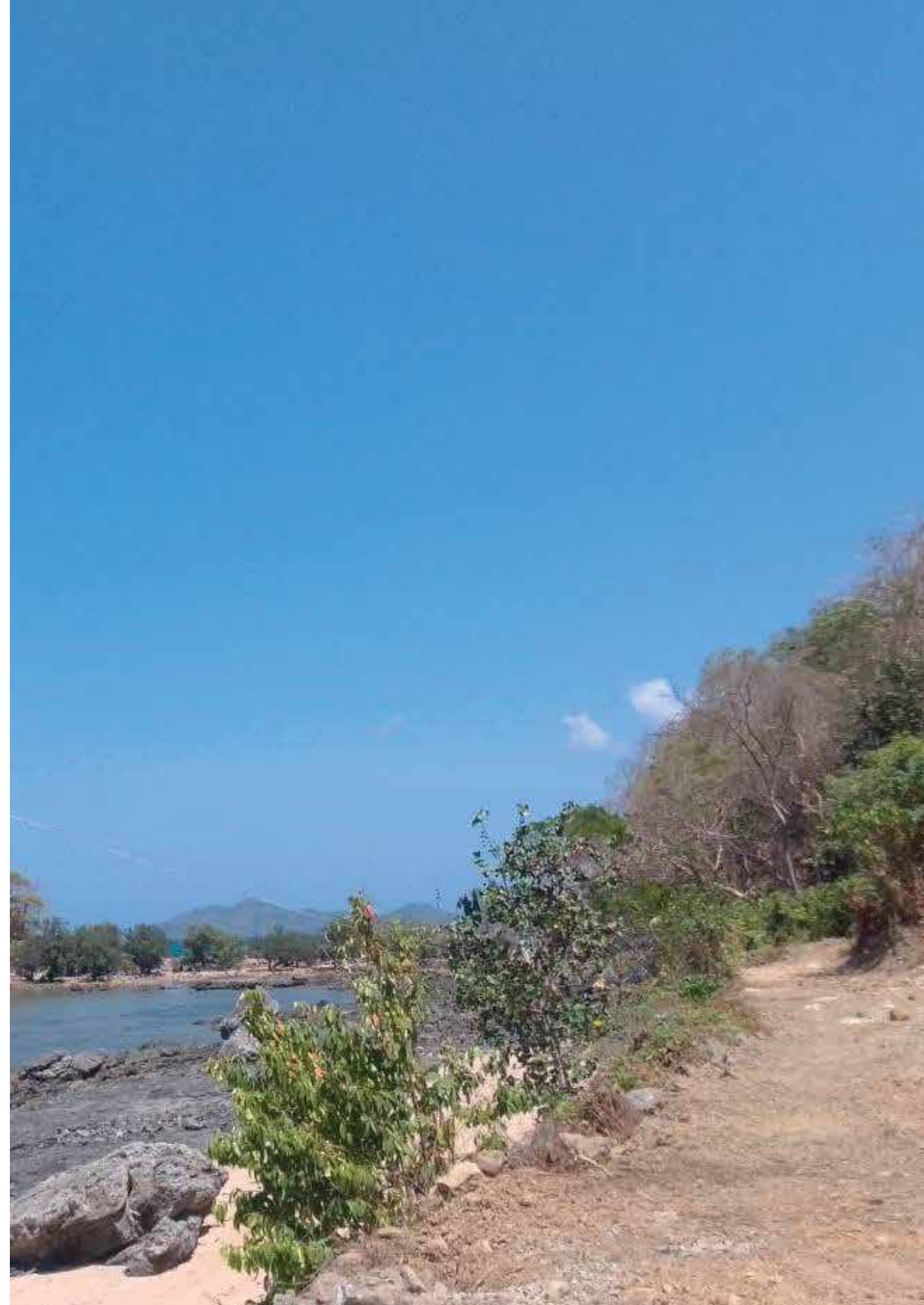
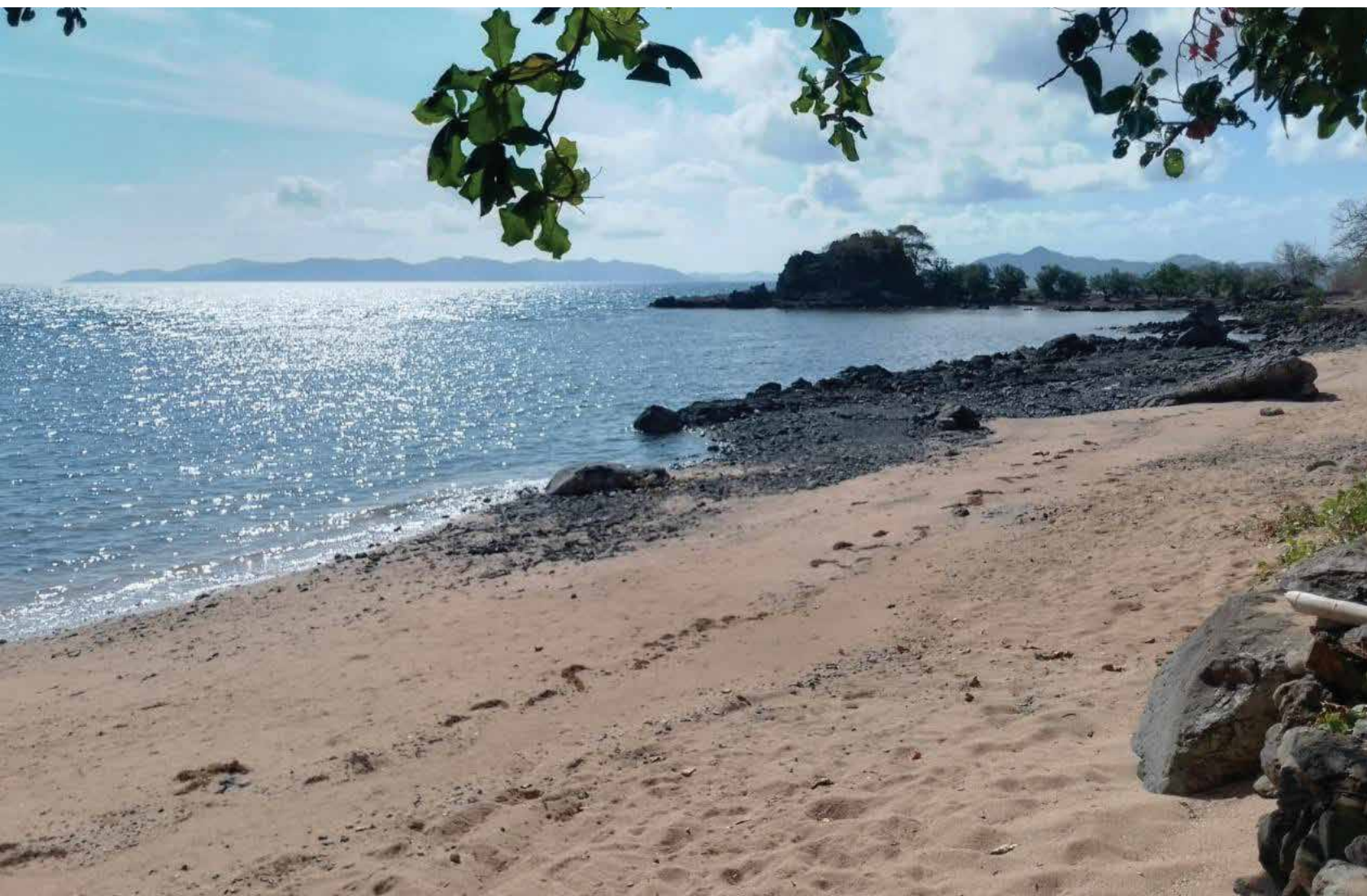
Temporary Road Access





# Beach Front Progress

BEACH FRONT CLEARING





# El Nido Beach

REDISCOVER LIFE IN NATURE

[www.elnidobeach.com](http://www.elnidobeach.com)  
[support@elnidobeach.com](mailto:support@elnidobeach.com)